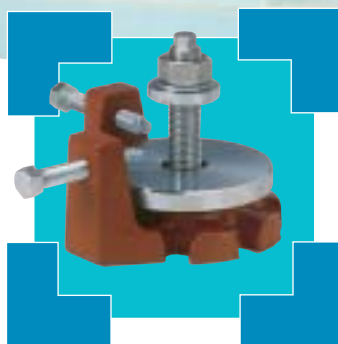


BW-Fixatoren® Series MS

... for vertical and lateral alignment and anchoring of electric motors, pumps, compressors and cooling apparatus

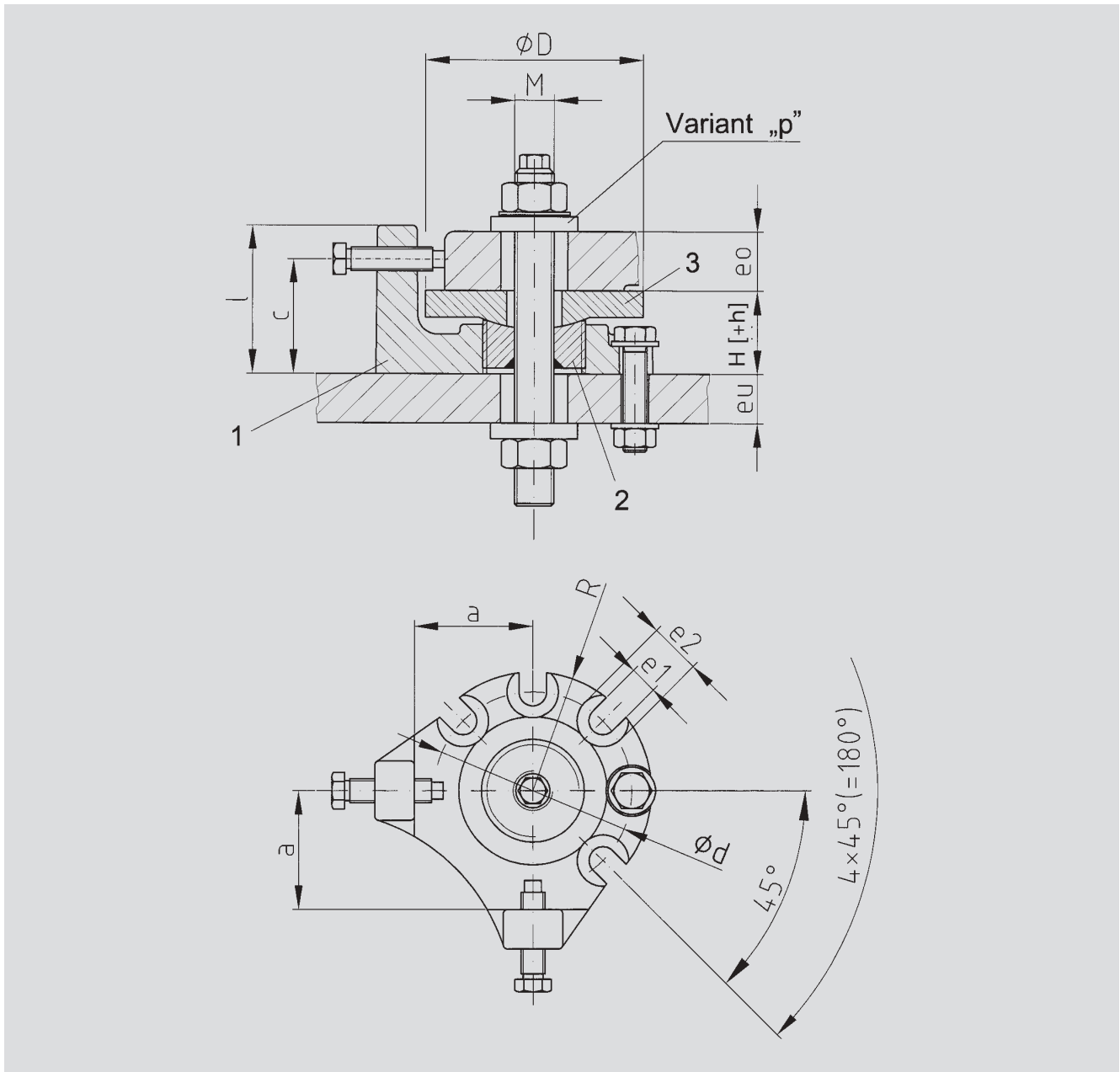
Installation Varieties and Technical Information



BWF
...the best for accuracy.

Dimensions of Series MS

GA Basic unit



Size	a	ϕD	H	h		M		l	c	ϕd	R	e1	e2	
I	40	70	40	12		12	16	20	68	56	85	50	12	23
II	60	110	40	12		16	20	24	75	58	100	60	14	26
II	80	150	40	12		16	20	24	75	58	100	60	14	26
III	110	210	50	12		24	30	36	85	70	140	80	18	32
III	150	210	50	12		24	30	36	85	70	140	80	18	32

Description

As shown in the above chart, the BW-Fixator® MS comes in five sizes. The vertical alignment is accomplished from the top with a threaded element. It has two lateral adjusters providing positive horizontal positioning.

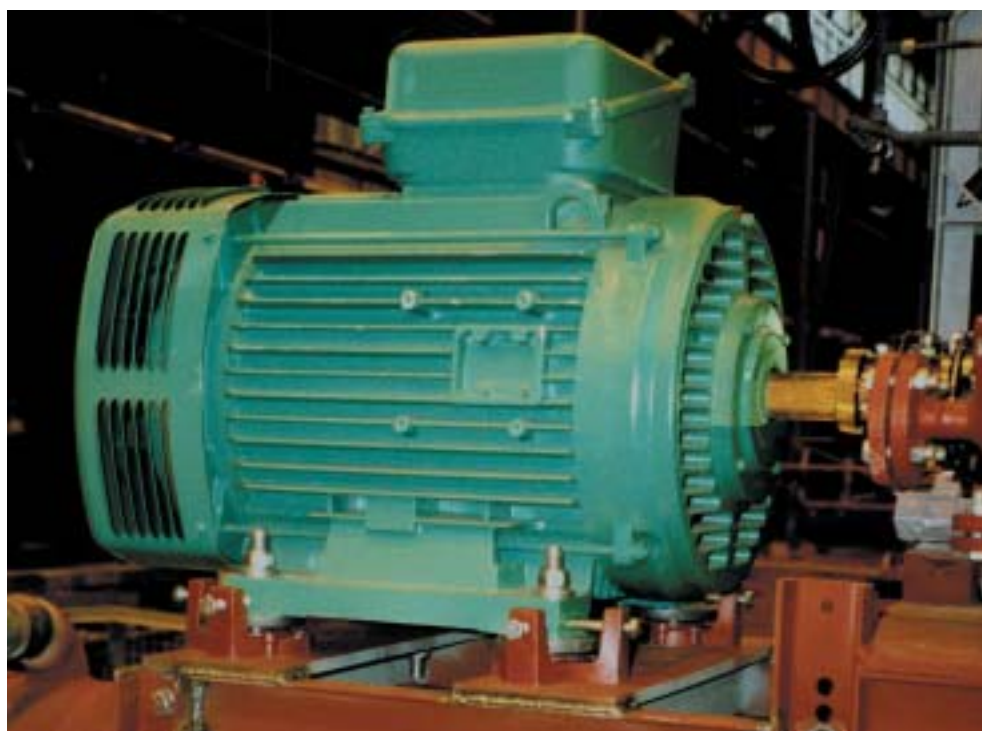
To ensure positive support the bearing plate incorporates a spherical seat. Normally the BW-Fixator® MS will be fastened to a steel base frame. It can also be adapted to concrete pedestal installations.

Technical Data of Series MS

Size	Dim	MS I/II			MS II	MS III		
Vertical levelling screw		M12	M16	M20	M24	M24	M30	M36
Max. vertical load	kN	8	20	30	40	40	50	60
Max. torque at levelling screw	Nm	40	100	150	200	300	400	450
Max. torque at the nut	Nm	55	140	270	450	450	900	1600
Vertical adjustment per screw turn		all sizes 1 mm						

Size	Dim	MS I	MS II	MS III
Lateral levelling screw		M10	M12	M16
Max. torque	Nm	25	35	60
Permissible max. adjusting load	kN	18	22	26

Subject to modification without notice



Alignment Procedures

1. Lower the motor or machine onto the BW-Fixator® MS
2. Align first the vertical direction (without tightening nuts at the levelling bolt)
3. Tighten the lower nut on the anchor bolt against the base frame
4. Align the machine in the lateral direction
5. Tighten the upper nut to secure the motor or machine
6. Check the alignment