

BW-Fixatoren® Series LK



...for anti-vibration
installation
of machines

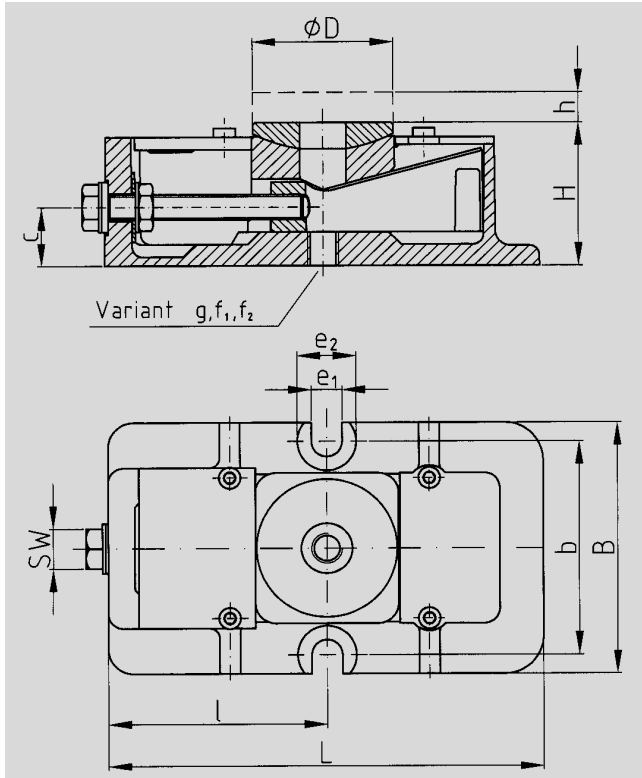
Installation Varieties and
Technical Information



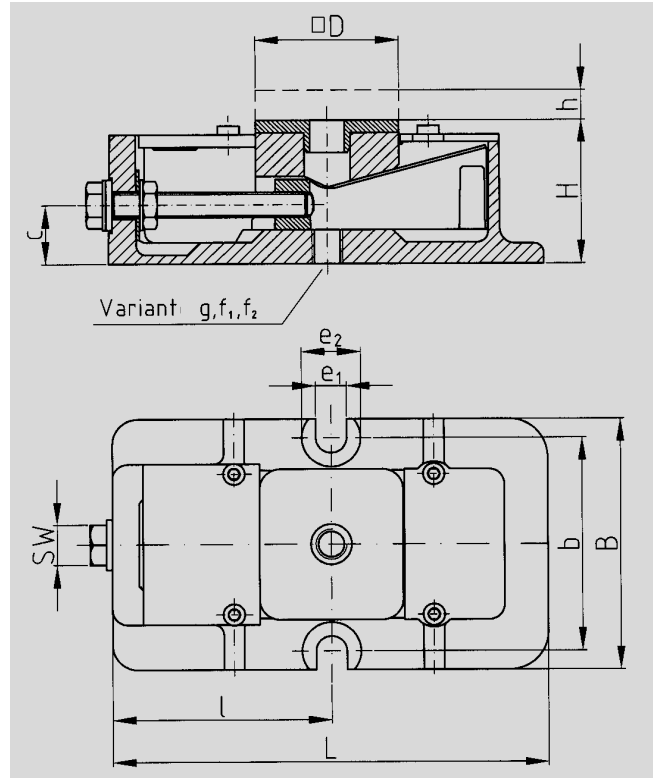
BWF
...the best for accuracy.

Dimensions of Series LK

GA-K Basic unit

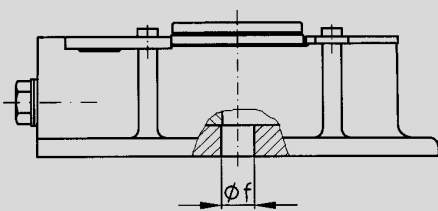


GA-D Basic unit

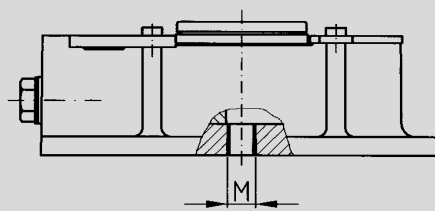


Size	L	B	H	ϕD	$\square D$	SW	h	l	b	e1	e2	c
I	170	100	58	55	58	17	12	85	85	12	23	24
II	205	120	70	70	67	19	12	100	100	14	26	28
III	240	140	80	90	90	24	12	123	120	14	26	36

Variant f

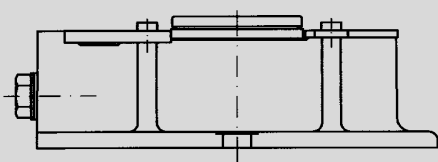


Variant g



Size	f1	f2	M
I	13	17	M12
II	17	19	M16
III	21	25	M20

Variant b



b
Machined bottom of the housings, the height is 2 mm less

Technical Data for Series LK

Size		Dim	LK I	LK II	LK III
Permissible maximum load		N	30 000	55 000	85 000
Permissible maximum lifting load		N	20 000	40 000	60 000
Torque at adjusting screw	Maximum	N·m	20	35	55
	Security	N·m	8	10	12
Vertical Adjustment per screw turn		mm	0,40	0,47	0,43
Weight of basic unit		kg	3	5,5	9,5

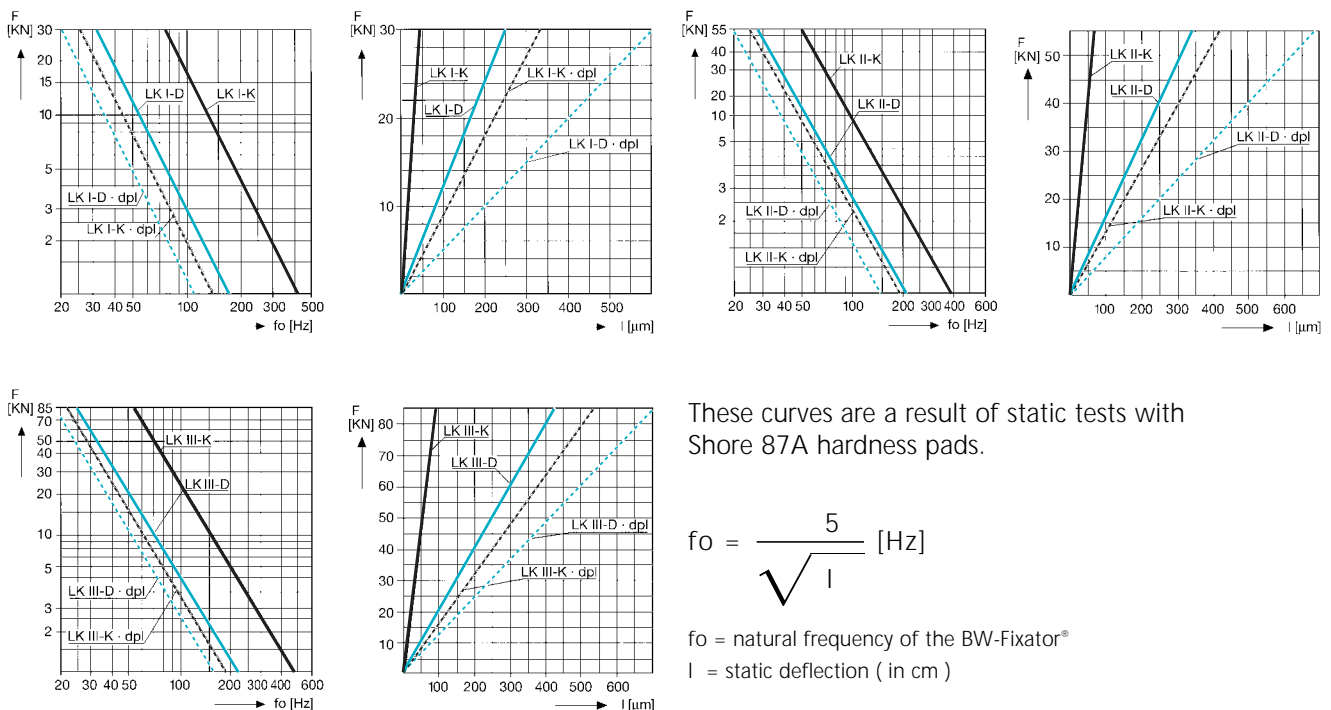
Note: The BW-Fixators® LK cannot adjusted with the anchor nut tightened

Determining BW-Fixator® Sizes

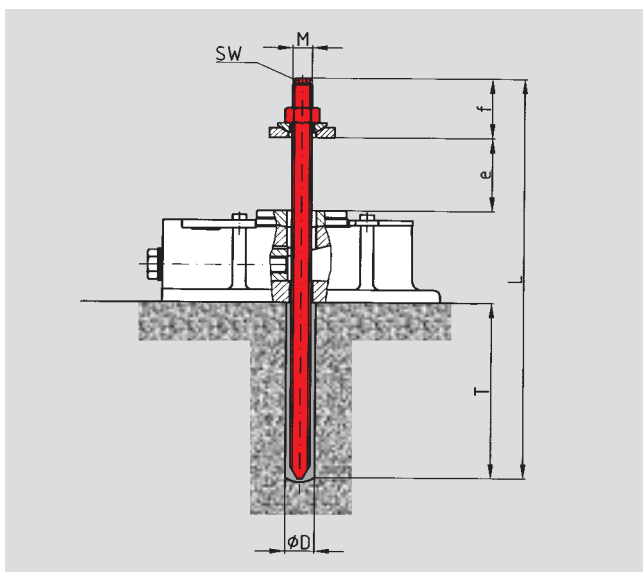
Divide the total load (machine weight and workpiece) by the number of bearing points to determine the average load per mount. Select a mount size with an equal or greater recommended static load.

For machinery with sizable variations in partial weight, it is the heaviest machine load that has to be divided by the number of bearing points and the resulting BW-Fixator® size has to be used everywhere under the machine.

Load/Deflection and Natural Frequency Data



Anchor bolts and studs

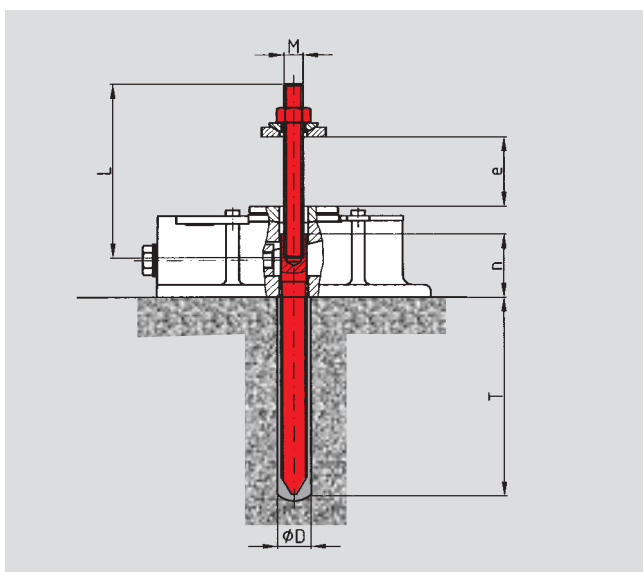


due

Resin anchor
(Capsule and stud)

LK	M	L	SW	f	e		Hole		Max. Torque Nm	Clamping Force* max. N
					from	to	Ø D	T		
I	M12	250	8	30	0	50	14	110	30	10 000
II	M16	300	10	35	0	70	18	125	60	15 000
III	M20	350	10	40	0	60	25	170	100	25 000

*Concrete >= B25



due/2

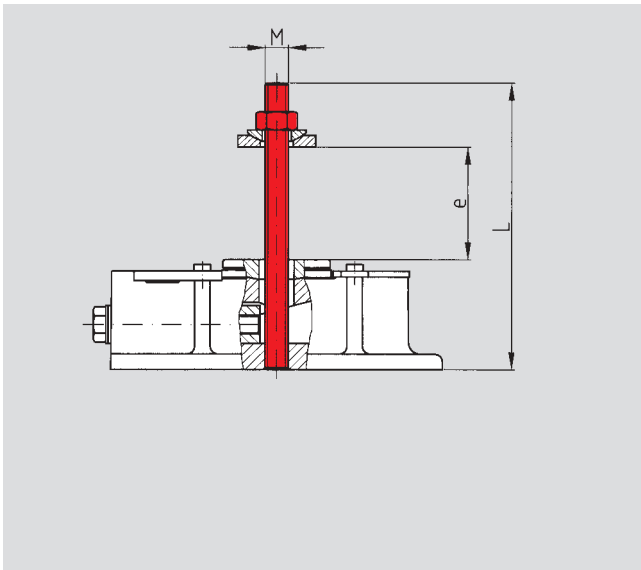
Split resin anchor
(Capsule and split stud)

Note:
Specify dimension "e"
(thickness of machine leg)
in your order

LK	M	L	n	e		Hole		Max. Torque Nm	Clamping Force* max. N
				von	bis	Ø D	T		
I	M12	130	40	0	60	18	125	30	10 000
II	M16	150	40	0	60	18	125	60	15 000
III	M20	165	50	0	70	25	170	100	25 000

*Concrete >= B25

Anchor bolts and studs

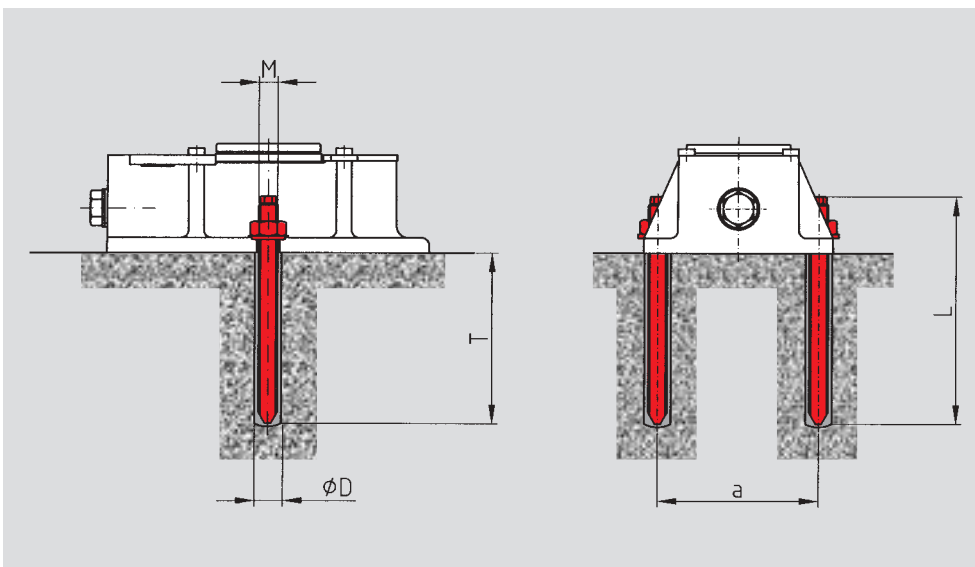


ste

Short or long stud bolt for attaching the machine to the BW-Fixator®

Note:
Specify dimension "e"
(thickness of machine leg)
in your order

LK	M	L			L			Max. Torque Nm	Clamping Force max. N
		short	from	to	long	from	to		
I	M12	130	0	40	150	45	60	30	10 000
II	M16	150	0	40	180	45	70	60	15 000
III	M20	175	0	50	210	55	85	100	25 000

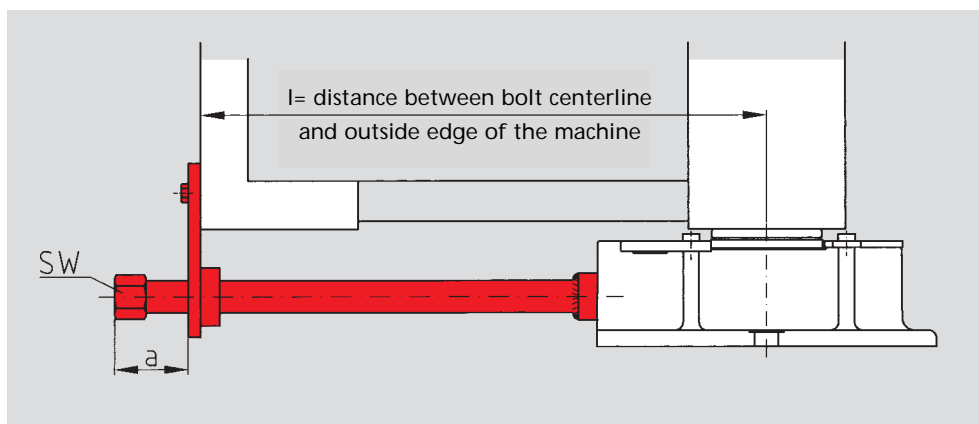


C

Side anchor bolts for connecting BW-Fixator® to the foundation
2 resin anchors
and 2 studs

LK	M	L	a	Hole		Max. Torque Nm	Clamping Force max. N
				∅ D	T		
I	M10	130	85	12	90	20	14 000
II	M12	160	100	14	110	30	20 000
III	M12	160	120	14	110	30	20 000

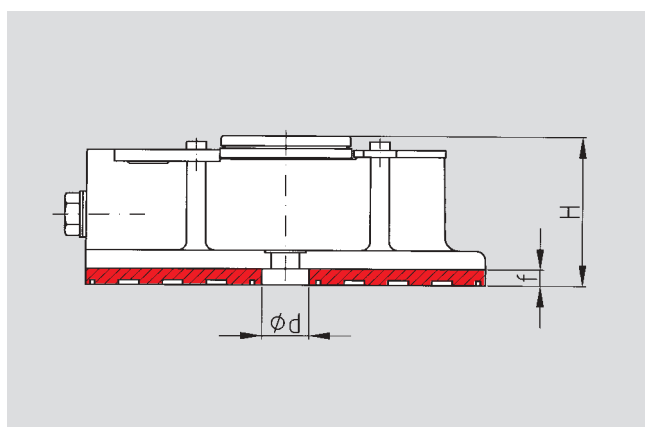
Other Applications



le

Extended set screw on BW-Fixator® arranged inwards of the machine side

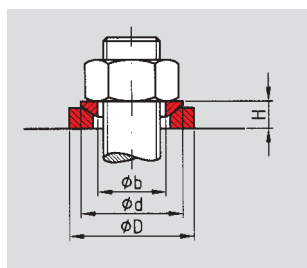
LK	a	SW	Length	
			min. l	Tube
I	50	22	140	24x4
II	50	22	150	24x4
III	50	22	170	24x4



dpl

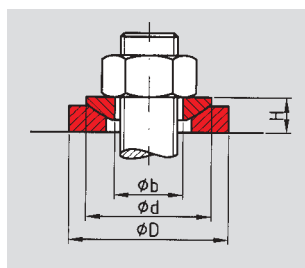
Anti-vibration pad

LK	f	H	Ø d
I	7	65	20
II	7	77	22
III	7	87	25



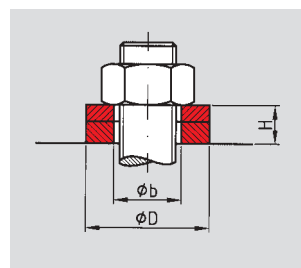
p Spherical washer set for non-parallel bearing surfaces

LK	Ø D	H	Ø d	b
I	40	9	30	13
II	40	10	30	17
III	44	10	36	21



r Large spherical washer set for non-parallel bearing surfaces

LK	Ø D	H	Ø d	Ø b
I	-	-	-	-
II	44	10	36	17
III	56	13	44	21



i Isolation of anchor nut

LK	Ø D	H	Ø b
I	30	12	13
II	40	12	17
III	44	14	21

Subject to modification without notice